

# TCDT Series



CONTINUOUS  
OPERATION

Range of low profile wall mounted axial fans fitted with reversible **aluminium impeller** and manufactured from stainless sheet steel AISI 304

Available with specific three phase 4 pole motors for working temperature up to 85°C and 100%RH.

### Motors

Specific motors **IP55, Class H** insulation, equipped with stainless steel shaft and fastening.

Electrical supplies:

Three phase 400V-50Hz.

### Additional Information

Model TCDT/4-900 can also be fitted with 4, 5,5 or 7,5kW motor.

### On request

- Specific motor for working temperature up to 135°C or 150°C.
- Unidirectional aluminium impeller.
- Unidirectional or reversible impeller made with plastic blades locked within die cast aluminium hub.
- Motor with PTC thermal protection.
- High efficiency motors (EFF1).

## A P P L I C A T I O N S



Wood  
dryers



Industrial  
dryers



CONTINUOUS  
OPERATION

## ■ Technical characteristics

Before installation check that the product electrical characteristics listed on the data plate label (Voltage, power, frequency etc) match those of the intended electrical supply.

Model	Speed motor (r.p.m.)	Motor power (kW)	Maximum abs. current 400V (A)	Maximum airflow (m <sup>3</sup> /h)		Weight (kg)
				Unidirectional impeller	Reversible impeller	
TCDT/4-560 1,1kW	1430	1,1	2,5	11.200	9.200	30
TCDT/4-560 1,5kW	1430	1,5	3,4	12.800	10.500	32
TCDT/4-630 1,1kW	1430	1,1	2,5	13.600	12.700	34
TCDT/4-630 1,5kW	1430	1,5	3,4	16.200	14.700	35
TCDT/4-630 2,2kW	1440	2,2	4,8	18.400	16.400	39
TCDT/4-630 3kW	1440	3	6,5	20.000	17.300	42
TCDT/4-710 1,1kW	1430	1,1	2,5	17.000	14.500	35
TCDT/4-710 1,5kW	1430	1,5	3,4	19.900	17.700	37
TCDT/4-710 2,2kW	1440	2,2	4,8	22.000	20.500	41
TCDT/4-710 3kW	1440	3	6,5	25.500	22.900	44
TCDT/4-800 2,2kW	1440	2,2	4,8	28.900	23.800	47
TCDT/4-800 3kW	1440	3	6,5	33.800	28.700	50
TCDT/4-800 4kW	1440	4	8,3	36.500	30.700	56
TCDT/4-900 3KW	1440	3	6,5	33.000	31.000	52

## Acoustic characteristics

Sond power spectrum in dB(A) at the inlet.

Frequency bands in Hz.

To obtain the sound power spectrum, subtract the correction value shown in the following chart from the value in the performance curve.

Model 4-560	63	125	250	500	1000	2000	4000	8000
UNIDIRECTIONAL IMPELLER 560								
PB	-15	4	5	9	11	7	-1	-9
PM	-15	5	6	9	11	6	-1	-9
PA	-13	5	8	9	11	6	-1	-8
REVERSIBLE IMPELLER 560								
PB	-10	4	5	9	11	7	-1	-9
PM	-10	5	6	9	11	6	-1	-9
PA	-8	5	8	9	11	6	-1	-8

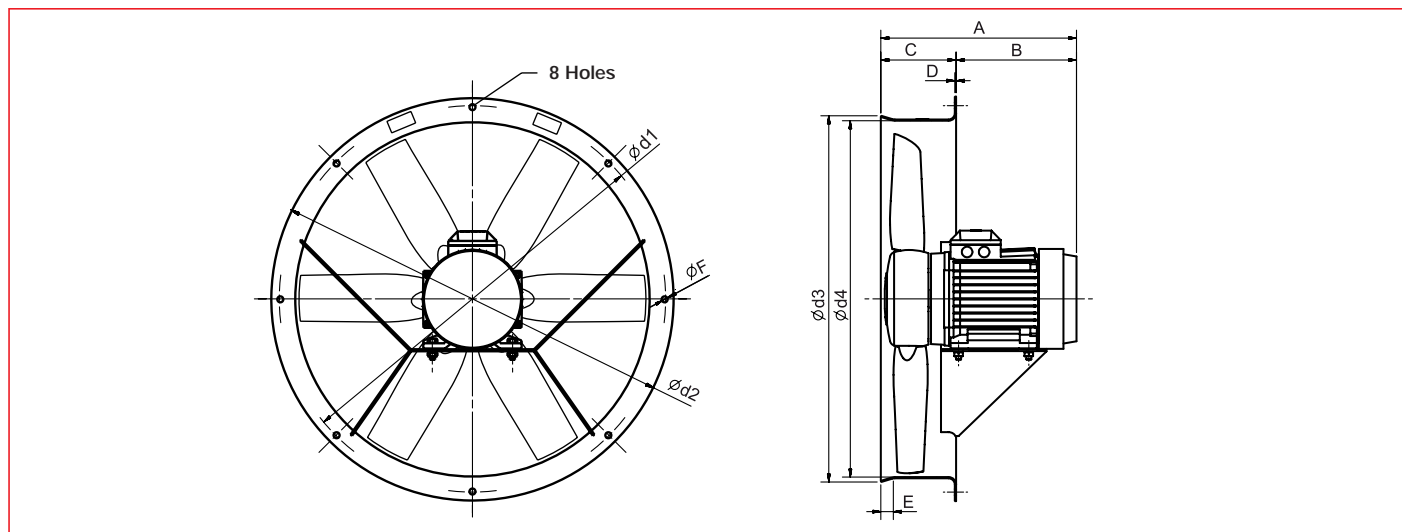
Model 4-710	63	125	250	500	1000	2000	4000	8000
UNIDIRECTIONAL IMPELLER 710								
PB	-22	6	8	10	14	10	2	-5
PM	-19	4	9	11	13	9	2	-5
PA	-14	3	11	12	12	8	2	-5
HELICE 710 REVERSIBLE								
PB	-16	0	6	11	14	10	3	-5
PM	-13	3	9	12	14	9	2	-5
PA	-10	7	9	12	13	9	2	-5

Model 4-900	63	125	250	500	1000	2000	4000	8000
UNIDIRECTIONAL IMPELLER 900								
PB	-22	7	11	12	15	12	4	-3
PM	-21	6	9	12	16	13	5	-2
PA	-18	-6	13	13	15	12	4	-2
REVERSIBLE IMPELLER 900								
PB	-12	1	9	13	16	13	6	-1
PM	-13	1	9	13	16	13	6	-1
PA	-14	0	9	13	16	13	5	-1

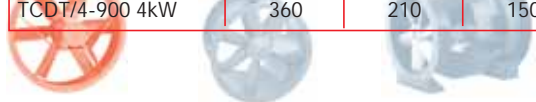
Model 4-630	63	125	250	500	1000	2000	4000	8000
UNIDIRECTIONAL IMPELLER 630								
PB	-19	4	7	10	13	9	1	-6
PM	-18	3	7	10	13	8	1	-6
PA	-15	4	9	10	12	8	1	-6
REVERSIBLE IMPELLER 630								
PB	-14	0	5	10	13	9	1	-7
PM	-12	4	7	10	12	7	0	-7
PA	-6	6	7	11	12	7	1	-6

Model 4-800	63	125	250	500	1000	2000	4000	8000
UNIDIRECTIONAL IMPELLER 800								
PB	-25	4	8	11	15	11	3	-5
PM	-20	4	10	13	15	10	3	-4
PA	-15	2	13	13	14	9	2	-4
REVERSIBLE IMPELLER 800								
PB	-16	0	8	12	15	12	4	-4
PM	-15	1	10	12	14	10	3	-5
PA	-10	7	10	12	14	10	3	-4

## Dimensions (mm)



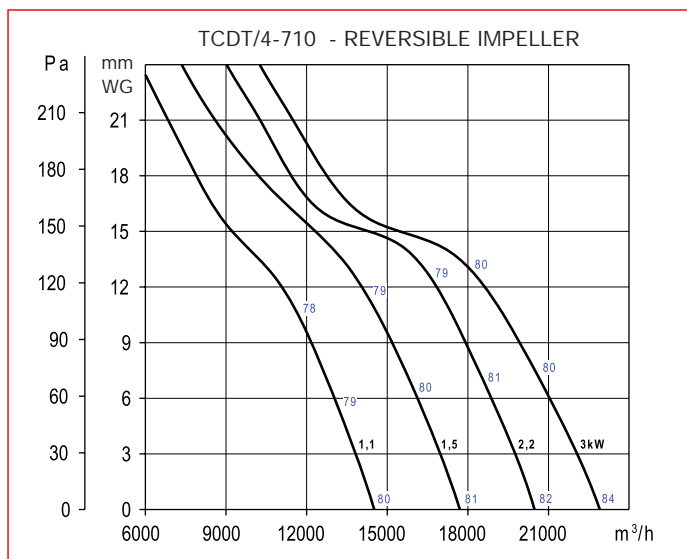
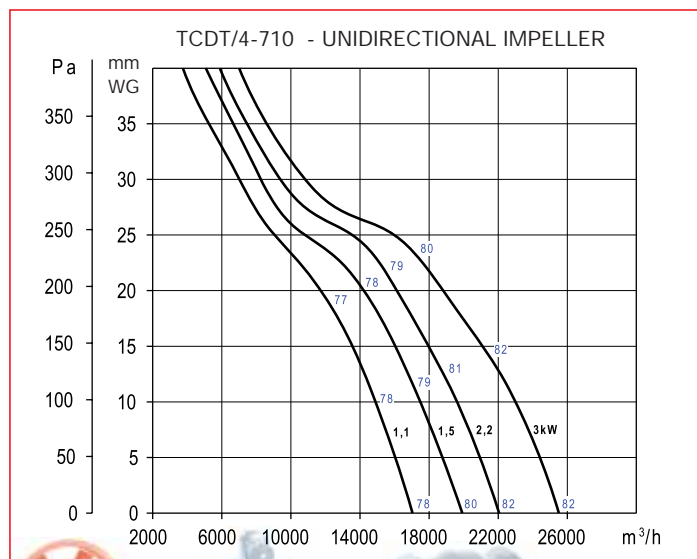
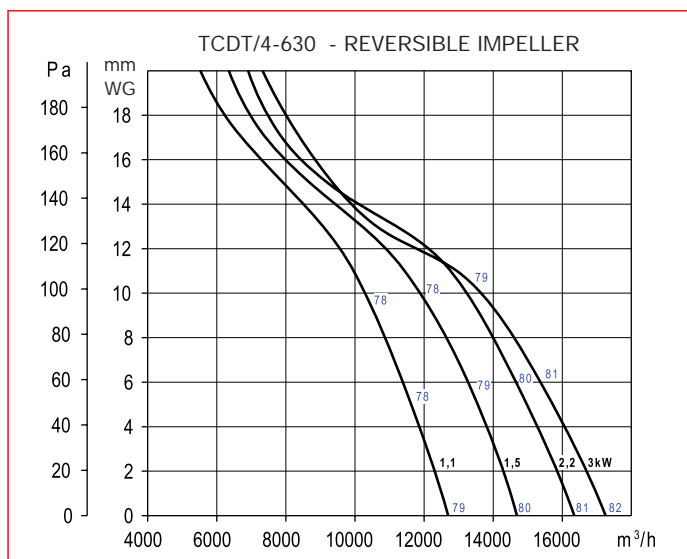
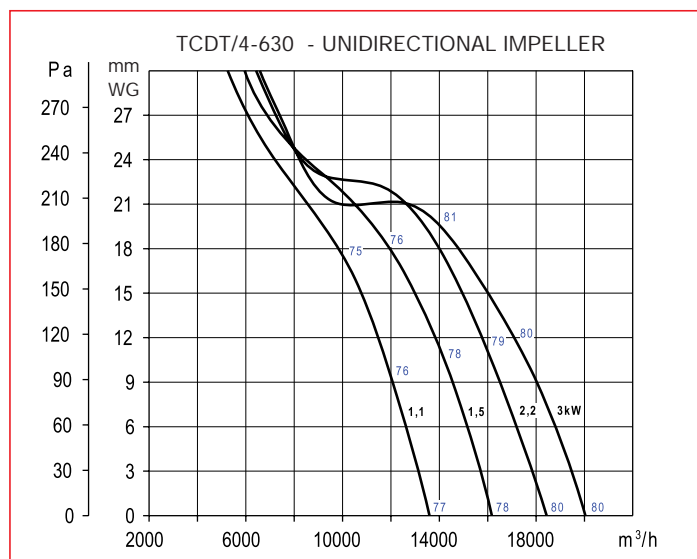
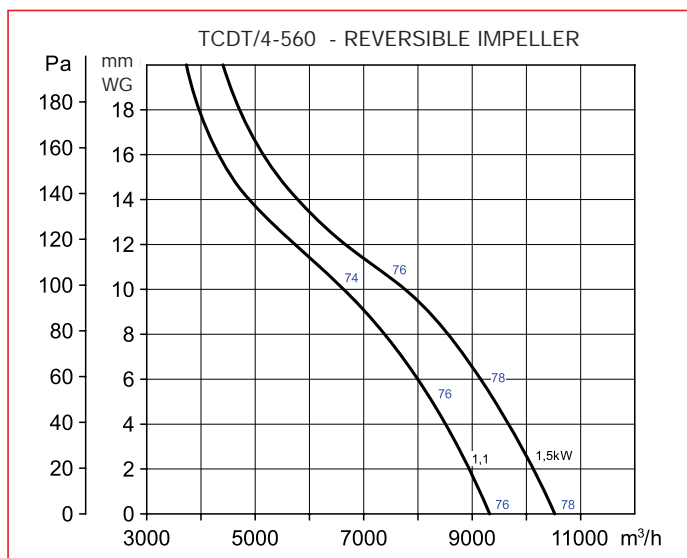
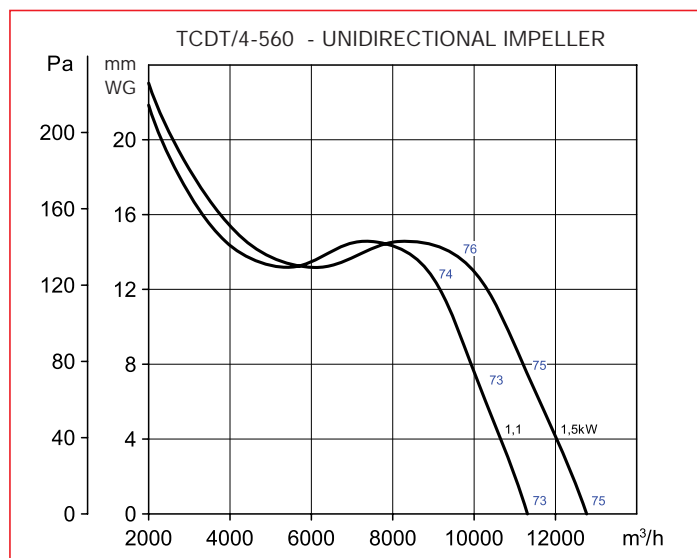
Model	A	B	C	D	E	F	d1	d2	d3	d4
TCDT/4-560 1,1KW	296	146	150	2,5	25	12	560	620	655	570
TCDT/4-560 1,5KW	296	146	150	2,5	25	12	560	620	655	570
TCDT/4-630 1,1kW	296	146	150	2,5	25	12	690	725	650	630
TCDT/4-630 1,5kW	296	146	150	2,5	25	12	690	725	650	630
TCDT/4-630 2,2kW	342	192	150	2,5	25	12	690	725	650	630
TCDT/4-630 3kW	342	192	150	2,5	25	12	690	725	650	630
TCDT/4-710 1,1kW	296	146	150	2,5	25	12	770	806	730	710
TCDT/4-710 1,5kW	296	146	150	2,5	25	12	770	806	730	710
TCDT/4-710 2,2kW	342	192	150	2,5	25	12	770	806	730	710
TCDT/4-710 3kW	342	192	150	2,5	25	12	770	806	730	710
TCDT/4-800 2,2kW	342	192	150	2,5	25	12	860	896	820	800
TCDT/4-800 3kW	342	192	150	2,5	25	12	860	896	820	800
TCDT/4-800 4kW	360	210	150	2,5	25	12	860	896	820	800
TCDT/4-900 3KW	342	192	150	2,5	25	12	900	970	1006	915
TCDT/4-900 4kW	360	210	150	2,5	25	12	900	970	1006	915



## Performance curves

- Air volume in, m<sup>3</sup>/h
- Static pressure in mmWG and Pa
- Sound pressure level (dBA), measured at 3 times the diameter dimension.

TCDT  
Special applications axial fans



## Performance curves

- Air volume in,  $m^3/h$
- Static pressure in mmWG and Pa
- Sound pressure level (dBA), measured at 3 times the diameter dimension.

